

H45809

-UN-01JAN94



JOHN DEERE 893 CORN HEAD

(SPECIFICATIONS AND DESIGN SUBJECT TO CHANGE WITHOUT NOTICE)

DATE OF MANUFACTURE

MODEL NO.	DATE
493	(1993-)
494	(1993-)
594	(1993-)
693	(1993-)
693 SH	(1993-)
694	(1993-1999)
890	(1997-)
893	(1993-)
894	(1993-)
1092	(1996-)
1290	(1996-)
1291	(1996-)
1293	(1993-)

SERIAL NUMBER PLATE

USE ALL NUMBERS, LETTERS AND SPACES SHOWN ON THE SERIAL NUMBER PLATE IN WARRANTY CORRESPONDENCE.

CORN HEADS (-567200)

ON THESE CORN HEADS, THE SERIAL NUMBER PLATE IS LOCATED ON THE LEFT-HAND SIDE OF THE FRAME.

EXAMPLE: E0444567200H

E - EQUIPMENT
0444 - CORN HEAD MODEL
567200 - CORN HEAD SERIAL NUMBER
H - FACTORY (HARVESTER WORKS)

CORN HEADS (567201-)

ON THESE CORN HEADS, THE SERIAL NUMBER PLATE IS LOCATED ON THE LEFT-HAND SIDE OF THE FRAME.

*EXAMPLE: H00444X567201
CORN HEAD*

(FIRST LINE) H0 - FACTORY (HARVESTER WORKS)
 0444 - CORN HEAD MODEL
 X - CONFIGURATION/MODEL SUFFIX
 567201 - CORN HEAD SEQUENCE NUMBER (SERIAL NUMBER)
(SECOND LINE) CORN HEAD - PRODUCT TYPE

SERIAL NUMBER LISTING INFORMATION

SERIAL NUMBER INFORMATION IS LISTED TO SHOW ON WHICH MACHINES EACH PART CAN BE USED;
FOR EXAMPLE:

- THE PART CAN BE USED ON ALL MACHINES
- 000000- THE PART CAN BE USED ON ALL MACHINES BEGINNING WITH THE SERIAL NUMBER LISTED.
- 000000 THE PART CAN BE USED ON ALL MACHINES UP TO AND INCLUDING THE SERIAL NUMBER LISTED.
- 000000-000000 THE PART CAN BE USED ON ALL MACHINES BETWEEN AND INCLUDING THE SERIAL NUMBERS LISTED.

WHEN XXXXXX'S ARE LISTED IN PLACE OF A SERIAL NUMBER, A SERIAL NUMBER CHANGE WAS MADE BUT THE EXACT SERIAL NUMBER WAS NOT AVAILABLE WHEN THE CATALOG WAS PRODUCED.

IMPORTANT

THIS PARTS CATALOG CONTAINS COMPLETE PARTS INFORMATION ON THE 90 SERIES CORN HEADS. VINTAGE IS DETERMINED BY SERIAL NUMBERS UNDER WHICH CORN HEADS WERE MANUFACTURED. IT IS IMPORTANT THAT THE CORRECT SERIAL NUMBER BE USED WHEN ORDERING PARTS.

JDM REMANUFACTURED COMPONENTS

THE SERVICE PARTS LISTED IN THIS CATALOG ARE INTENDED FOR THE REPAIR OF ORIGINAL EQUIPMENT COMPONENTS. ALTHOUGH MOST SERVICE PARTS MAY BE USED TO REPAIR REMANUFACTURED COMPONENTS, THE REMANUFACTURED DESIGN MAY CHANGE PARTS SUFFICIENTLY SO THAT SERVICE PARTS ARE INADEQUATE OR NOT USABLE.

BOLT AND CAP SCREW STRENGTH IDENTIFICATION

BOLTS AND CAP SCREWS REQUIRED TO HAVE HIGH-STRENGTH QUALITIES EQUIVALENT TO SAE GRADE 8 ARE IDENTIFIED THROUGHOUT THIS CATALOG BY THE DESCRIPTION HS SAE 8. ALL STANDARD BOLTS AND CAP SCREWS ARE SAE GRADE 5 OR LOWER.

BOLTS AND CAP SCREWS REQUIRED TO HAVE HIGH-STRENGTH QUALITIES EQUIVALENT TO PROPERTY CLASS 10.9 ARE IDENTIFIED THROUGHOUT THIS CATALOG BY THE DESCRIPTION HS 10.9. ALL STANDARD BOLTS AND CAP SCREWS ARE PROPERTY CLASS 8.8 OR LOWER.

COMPLETE GOODS LISTINGS

COMPLETE GOODS ARE LISTED IN BOLD FACE TYPE. ORDER SEPARATELY. DO NOT INCLUDE ON REPLACEMENT PARTS ORDER.

SI UNITS OF MEASURE

METRIC DIMENSIONS ARE GIVEN, WHERE APPLICABLE, THROUGHOUT THIS PARTS CATALOG.

CHANGE INDICATOR LINE (MICROFICHE CATALOGS ONLY)

CHANGES AFFECTING THE ORDERING OF PARTS ARE IDENTIFIED BY VERTICAL LINES MARKED IN THE LEFT-HAND MARGIN OF REVISED PARTS LISTING IMAGES. A LINE IS ALSO AT THE LEFT-HAND EDGE OF THE SAME PART NUMBER IN THE NUMERICAL INDEX TO SHOW THE LOCATION OF REVISED INFORMATION.

*COPYRIGHT (C) 2000. DEERE & COMPANY. MOLINE, ILLINOIS.
ALL RIGHTS RESERVED*

**Thanks very much for your reading,
Want to get more information,
Please click here, Then get the complete
manual**

JustClickHere 

NOTE:

**If there is no response to click on the link above,
please download the PDF document first, and then
click on it.**

**Have any questions please write to me:
admin@servicemanualperfect.com**

ALPHABETICAL INDEX - CONTINUED

GRID		PAGE	GRID		PAGE
E3	DRIVE SHAFT, MAIN, AND COUPLER	102	B13	HYDRAULIC CYLINDER AND HOSES, ADJ. DECKP LATES (660201-).....	36
E5	DRIVE SHAFT, MAIN, AND COUPLER	104	B16	HYDRAULIC FITTINGS, ADJUSTABLE DECKPLATE S (660201-)	40
D3	DRIVE SHIELD, ROW-UNIT	78	I		
D5	DRIVE SHIELD, ROW-UNIT	80	B18	INDICATOR, ADJUSTABLE DECK PLATE (660201-)	42
C10	DRIVES, ROW-UNIT AND CROSS AUGER (-659999(594,693,693SH)	60	B3	INDICATOR, DECK PLATE	26
C12	DRIVES, ROW-UNIT AND CROSS AUGER (-659999)(594,693,693SH)	62	A17	INNER GATHERER COVER AND SUPPORT	16
C10	DRIVES, ROW-UNIT AND CROSS AUGER (-659999)(694,893,894 AND 1293).....	60	A13	INNER GATHERER POINTS.....	12
C12	DRIVES, ROW-UNIT AND CROSS AUGER (-659999)(694,893,894 AND 1293).....	62	A15	INNER GATHERER POINTS WITH ACTIVE HEIGHT CONTROL	14
C14	DRIVES, ROW-UNIT AND CROSS AUGER (660000-)(694,893,894 AND 1293).....	64	A19	INNER GATHERER SHIELD.....	18
C16	DRIVES, ROW-UNIT AND CROSS AUGER (660000-)(694,893,894 AND 1293).....	66	A17	INNER GATHERER SUPPORT.....	16
C14	DRIVES, ROW-UNIT AND CROSS AUGER (660000-)(594,693,693SH)	64	A19	INNER GATHERER SUPPORT AND SHIELD	18
C16	DRIVES, ROW-UNIT AND CROSS AUGER (660000-)(594,693,693SH)	66	A21	INNER POINT & COVER ROW-SPACING CONVERS. 20" & 22" ROW-SPACINGS - OPTIONAL	20
C6	DRIVES, ROW-UNIT AND CROSS AUGER (493 AND 494)	56	A23	INNER POINT & COVER ROW-SPACING CONVERS. 40" ROW-SPACING - (OPTIONAL)	22
C8	DRIVES, ROW-UNIT AND CROSS AUGER (493 AND 494)	58	K		
C18	DRIVES, ROW-UNIT AND CROSS AUGER (494) CONVERSION FOR 6600SH AND 6620SH.....	68	F1	KIT, ANGLE TILT WEDGE	127
F			B15	KIT,ADJUSTABLE DECKPLATE CYLINDER REPAIR (660400-)	38
A11	FENDERS, OUTER GATHERER	10	C1	KNIFE STALK ROLL AND BARREL	50
B16	FITTINGS, HYDRAULIC, ADJUSTABLE DECKPLAT ES (660201-)	40	B5	KNIFE, TRASH.....	28
D3	FLOOR, AUGER	78	B9	KNIVES, ROW UNIT TRASH	32
D5	FLOOR, AUGER	80	L		
D11	FRAME, MAIN	86	D15	LATCH PIN ASSEMBLY, MAIN FRAME.....	90
D13	FRAME, MAIN	88	D17	LATCH PIN ASSEMBLY, MAIN FRAME.....	92
B9	FRAME, ROW UNIT	32	E20	LEVEL LAND DRIVE SHAFT	121
B5	FRAME, ROW-UNIT.....	28	D19	LIGHTS, MARKER	94
G			M		
A17	GATHERER COVER, INNER	16	E1	MAIN DRIVE SHAFT AND COUPLER	100
A11	GATHERER FENDER, OUTER.....	10	E3	MAIN DRIVE SHAFT AND COUPLER	102
A13	GATHERER POINTS, INNER	12	E5	MAIN DRIVE SHAFT AND COUPLER	104
A9	GATHERER POINTS, OUTER	8	C22	MAIN DRIVE SHAFT, COUPLER AND SHIELD - (CONV. FOR 693 ON 6600SH AND 6620SH).....	72
A19	GATHERER SUPPORT, INNER	18	C20	MAIN DRIVE SHAFT, COUPLER AND SHIELD - (CONV. PARTS FOR 494)	70
B7	GATHERING CHAIN, SPROCKETS AND TENSIONER	30	E9	MAIN DRIVE SHAFT, COUPLER AND SHIELD - CONTOUR MASTER (1092,1290,1291)	108
D15	GEAR CASE SHIELD, MAIN FRAME.....	90	E11	MAIN DRIVE SHAFT, COUPLER AND SHIELD - CONTOUR MASTER (1092,1290,1291).....	110
D17	GEAR CASE SHIELD, MAIN FRAME.....	92	E7	MAIN DRIVE SHAFT, COUPLER AND SHIELD - SIDEHILL (494)	106
C4	GEAR CASE, ROW-UNIT	54	E9	MAIN DRIVE SHAFT, COUPLER AND SHIELD - SIDEHILL/CONTOUR MASTER (594,693,694)	108
H			E11	MAIN DRIVE SHAFT, COUPLER AND SHIELD - SIDEHILL/CONTOUR MASTER (594,693,694)	110
D20	HARNES, CONTOUR MASTER (660201-)	95	E9	MAIN DRIVE SHAFT, COUPLER AND SHIELD - SIDEHILL/CONTOUR MASTER (893,894,1293)	108
D23	HARNES, STUBBLE LIGHT	98	E11	MAIN DRIVE SHAFT, COUPLER AND SHIELD - SIDEHILL/CONTOUR MASTER (893,894,1293)	110
E21	HEADER DRIVE SHAFT - SIDEHILL - WEASLER (693, 694,893 AND 894)	122	E9	MAIN DRIVE SHAFT, COUPLER AND SHIELD - SIDEHILL/CONTOUR MASTER (893,894,1293)	108
E23	HEADER DRIVE SHAFT - SIDEHILL -FOR CONNECTING TO 6600SH AND 6620SH.....	124	E11	MAIN DRIVE SHAFT, COUPLER AND SHIELD - SIDEHILL/CONTOUR MASTER (893,894,1293)	110
A15	HEIGHT CONTROL, ACTIVE	14	D15	MAIN FRAME GEAR CASE SHIELD	90
B13	HOSES, HYDRAULIC, ADJ. DECKPLATES (660201-)	36	D17	MAIN FRAME GEAR CASE SHIELD	92

ALPHABETICAL INDEX - CONTINUED

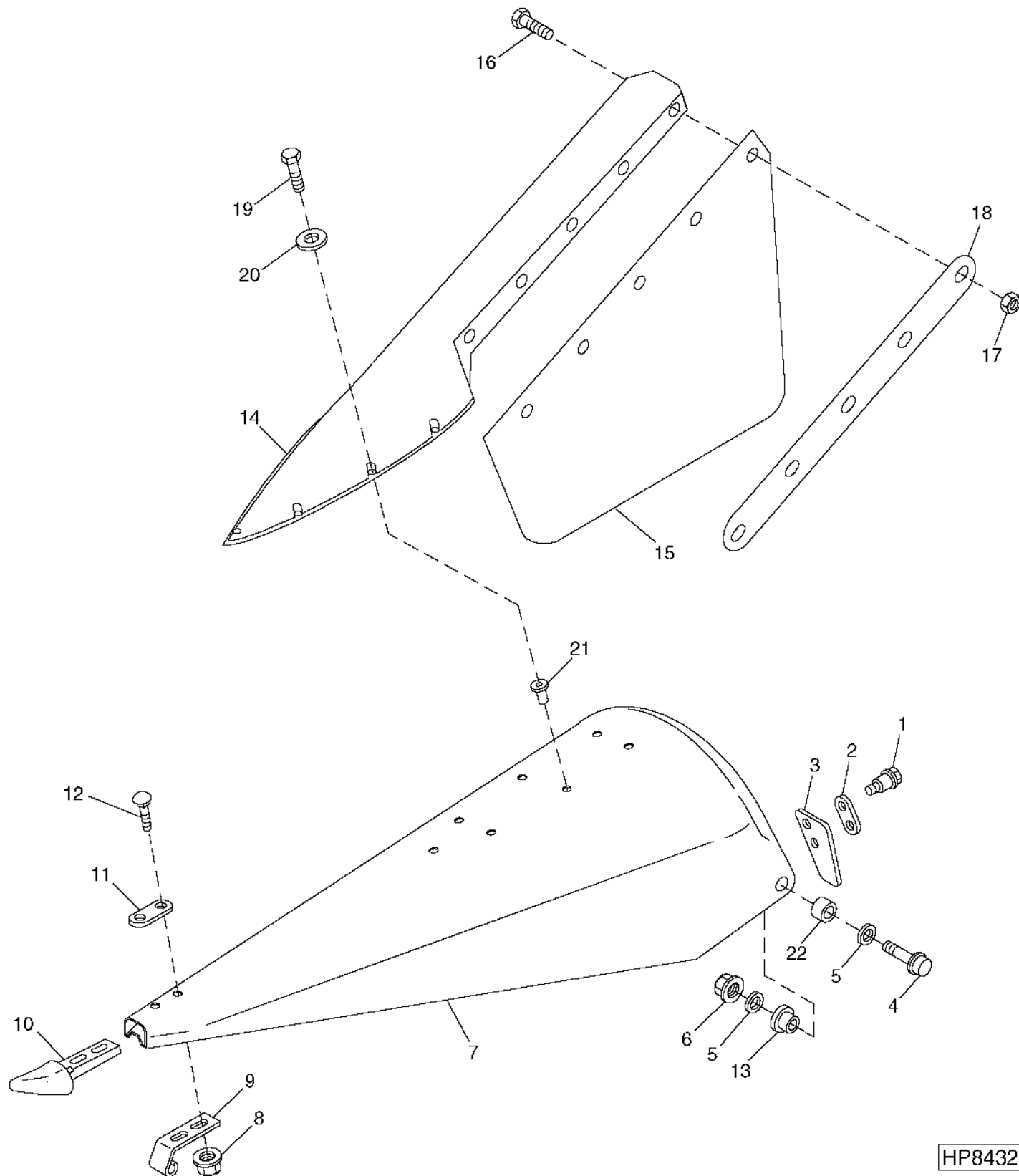
GRID		PAGE	GRID		PAGE
D15	MAIN FRAME ROW-UNIT DRIVE SHIELDS	90	F2	SAFETY AND INSTRUCTIONAL DECALS.....	128
D17	MAIN FRAME ROW-UNIT DRIVE SHIELDS	92	D21	SENSOR, ULTRASONIC - CONTOUR MASTER	
D15	MAIN FRAME SHIELDS & LATCH PIN ASSEMBLY	90		(660201-)	96
D17	MAIN FRAME SHIELDS & LATCH PIN ASSEMBLY	92	E19	SHAFT, DRIVE (494 AND 592).....	120
D11	MAIN FRAME, BACK SHEETS AND STRIPPERS	86	E20	SHAFT, DRIVE, FOR LEVEL LAND AND CONTOUR	
D13	MAIN FRAME, BACK SHEETS AND STRIPPERS	88		MASTER	121
D19	MARKER LIGHTS	94	D9	SHIELD, AUGER, CENTER CLOSURE	84
	O		C22	SHIELD, COUPLER AND MAIN DRIVE SHAFT -	
A11	OUTER GATHERER FENDERS	10		(CONV. FOR 693 ON 6600SH AND 6620SH).....	72
A9	OUTER GATHERER POINTS	8	C20	SHIELD, COUPLER AND MAIN DRIVE SHAFT -	
	P			(CONV. PARTS FOR 494)	70
B11	PIVOT BAR, ADJUSTABLE DECK PLATE.....	34	E7	SHIELD, COUPLER AND MAIN DRIVE SHAFT -	
B11	PLATE, ADJUSTABLE DECK, PIVOT BAR	34		SIDEHILL (494)	106
B5	PLATES, DECK	28	E9	SHIELD, COUPLER AND MAIN DRIVE SHAFT -	
A13	POINTS, INNER GATHERER	12		SIDEHILL/CONTOUR MASTER (594,693,694)	108
A9	POINTS, OUTER GATHERER	8	E11	SHIELD, COUPLER AND MAIN DRIVE SHAFT -	
E25	POWER SHAFT STORAGE CABLE	126		SIDEHILL/CONTOUR MASTER (594,693,694)	110
	R		E9	SHIELD, COUPLER AND MAIN DRIVE SHAFT -	
A23	ROW-SPACING CONVER.,INNER POINT & COVERS			SIDEHILL/CONTOUR MASTER (893,894,1293)	108
	40" ROW-SPACING - (OPTIONAL)	22	E11	SHIELD, COUPLER AND MAIN DRIVE SHAFT -	
A21	ROW-SPACING CONVERS.,INNER POINT & COVER			SIDEHILL/CONTOUR MASTER (893,894,1293)	110
	20" & 22" ROW-SPACINGS - OPTIONAL	20	A19	SHIELD, INNER GATHERER	18
C10	ROW-UNIT AND CROSS AUGER DRIVES		B1	SHIELDS, DECK PLATE ADJUSTMENT WIRING	
	(-659999)(594,693,693SH)	60		HARNESS	24
C12	ROW-UNIT AND CROSS AUGER DRIVES		D15	SHIELDS, MAIN FRAME	90
	(-659999)(594,693,693SH)	62	D17	SHIELDS, MAIN FRAME	92
C10	ROW-UNIT AND CROSS AUGER DRIVES		E23	SIDEHILL - HEADER DRIVE SHAFT -FOR	
	(-659999)(694,893,894 AND 1293).....	60		CONNECTING TO 6600SH AND 6620SH.....	124
C12	ROW-UNIT AND CROSS AUGER DRIVES		E21	SIDEHILL - WEASLER - HEADER DRIVE SHAFT	
	(-659999)(694,893,894 AND 1293).....	62		(693, 694, 893 AND 894)	122
C6	ROW-UNIT AND CROSS AUGER DRIVES		C18	SIDEHILL CONVERSION FOR 6600SH AND	
	(493 AND 494).....	56		6620SH (494).....	68
C8	ROW-UNIT AND CROSS AUGER DRIVES		C20	SIDEHILL CONVERSION FOR 6600SH AND	
	(493 AND 494).....	58		6620SH (494).....	70
C14	ROW-UNIT AND CROSS AUGER DRIVES		C22	SIDEHILL CONVERSION FOR 6600SH AND	
	(660000-)(594,693,693SH)	64		6620SH (693).....	72
C16	ROW-UNIT AND CROSS AUGER DRIVES		E23	SIDEHILL CONVERSION FOR 6600SH AND	
	(660000-)(594,693,693SH)	66		6620SH - HEADER DRIVE SHAFT	124
C14	ROW-UNIT AND CROSS AUGER DRIVES		E19	SIDEHILL DRIVE SHAFT (494 AND 592)	120
	(660000-)(694,893,894 AND 1293).....	64	E7	SIDEHILL MAIN DRIVE SHAFT, COUPLER AND	
C16	ROW-UNIT AND CROSS AUGER DRIVES			SHIELD (494).....	106
	(660000-)(694,893,894 AND 1293).....	66	E9	SIDEHILL MAIN DRIVE SHAFT, COUPLER AND	
C18	ROW-UNIT AND CROSS AUGER DRIVES (494)			SHIELD (594,693,694,893,894,1293)	108
	CONVERSION FOR 6600SH AND 6620SH.....	68	E11	SIDEHILL MAIN DRIVE SHAFT, COUPLER AND	
D3	ROW-UNIT DRIVE SHIELD.....	78		SHIELD (594,693,694,893,894,1293)	110
D5	ROW-UNIT DRIVE SHIELD.....	80	C3	SLIP CLUTCH, ROW-UNIT	52
D15	ROW-UNIT DRIVE SHIELDS, MAIN FRAME	90	C14	SLOW DOWN, ROW-UNIT AND CROSS AUGER	
D17	ROW-UNIT DRIVE SHIELDS, MAIN FRAME	92		DRIVES (660000-).....	64
B5	ROW-UNIT FRAME AND DECK PLATES	28	C16	SLOW DOWN, ROW-UNIT AND CROSS AUGER	
B9	ROW-UNIT FRAME, ADJUSTABLE DECK PLATES			DRIVES (660000-).....	66
	AND TRASH KNIVES	32	B7	SPROCKETS, GATHERING CHAIN	30
C4	ROW-UNIT GEAR CASE.....	54	C1	STALK ROLL BARREL	50
C3	ROW-UNIT SLIP CLUTCH	52	C1	STALK ROLL, KNIFE.....	50
	S		B24	STALK ROLLS AND BARREL.....	48
F4	SAFETY & INSTRUCTIONAL DECAL LOCATIONS	130	E25	STORAGE CABLE, POWER SHAFT	126
			B24	STRAIGHT FLUTE STALK ROLL	48
			D11	STRIPPERS	86
			D13	STRIPPERS	88
			D23	STUBBLE LIGHT HARNESS.....	98
			D23	STUBBLE LIGHTS	98
			A19	SUPPORT, INNER GATHERER	18
				T	
			B24	TAPERED STALK ROLL AND BARREL.....	48
			B7	TENSIONER, GATHERING CHAIN.....	30

ALPHABETICAL INDEX - CONTINUED

<i>GRID</i>		<i>PAGE</i>	<i>GRID</i>	<i>PAGE</i>
C24	TENSIONERS, DRIVE CHAIN.....	74		
B5	TRASH KNIVES	28		
B9	TRASH KNIVES, ROW UNIT	32		
U				
D21	ULTRASONIC SENSOR, CONTOUR MASTER (660201-)	96		
A17	ULTRASONIC SENSORS, INNER GATHERER.....	16		
W				
E7	WEASLER (494) MAIN DRIVE SHAFT, COUPLER AND SHIELD SIDEHILL	106		
E21	WEASLER HEADER DRIVE SHAFT - SIDEHILL (693, 694, 893 AND 894)	122		
F1	WEDGE, ANGLE TILT KIT	127		
B1	WIRING HARNESS, DECK PLATE ADJUSTMENT	24		

A9

OUTER GATHERER POINTS
HP8432 -UN-29JUL99



HP8432

A10

90 SERIES CORN HEADS

OUTER GATHERER POINTS - CONTINUED

KEY	PART NO.	PART NAME	QTY	SERIAL NO.	REMARKS
1	H146489	SCREW	2		(EXCEPT 1092)
2	H148273	STRIP	1		(EXCEPT 1092)
3	H148222	GATE	1	-676000	
	H166582	GATE	1	676001-	(890, 1290 AND 1291)
4	H141991	BOLT	2		
5	24H1226	WASHER	4		1/2" X 1-1/4" X 0.083"
6	E80242	LOCK NUT	2		
7	AH146578	GATHERER POINT	1		(SUB FOR AH145269 AND AH141632) (493 -655210, 494 -655374, 594 -655408, 693 -655174, 693SH -655519, 694 -655625, 893 -656231, 894 -655748, 1293 -655818)
	AH158245	GATHERER POINT	1	675101-	(890, 1290, 1291)
8	14M7296	FLANGE NUT	2		M10
9	H150537	REINFORCEMENT	1		
10	H148121	SHOE	1		
11	H148436	STRAP	1		
12	03M7246	BOLT	2		M10 X 60
13	H141850	BUSHING	2		
14	H155652	CROP DIVIDER	1		(A)
15	H155653	LIMIT CURTAIN	1		(A)
16	19M7802	SCREW	5		(A) M8 X 65
17	14M7396	LOCK NUT	5		M8
18	H155702	STRIP	1		(A)
19	19M7301	CAP SCREW	7		(A) M8 X 40
20	24H1136	WASHER	7		(A) 11/32" X 11/16" X 0.065"
21	H156680	NUT	7		(A) M8, (INCLUDED IN BH81180)
22	H169694	SPACER	2		(USE WITH AH146578)
..	BH81180	COMPLETE GOODS/SHIP. BUNDLE	1		

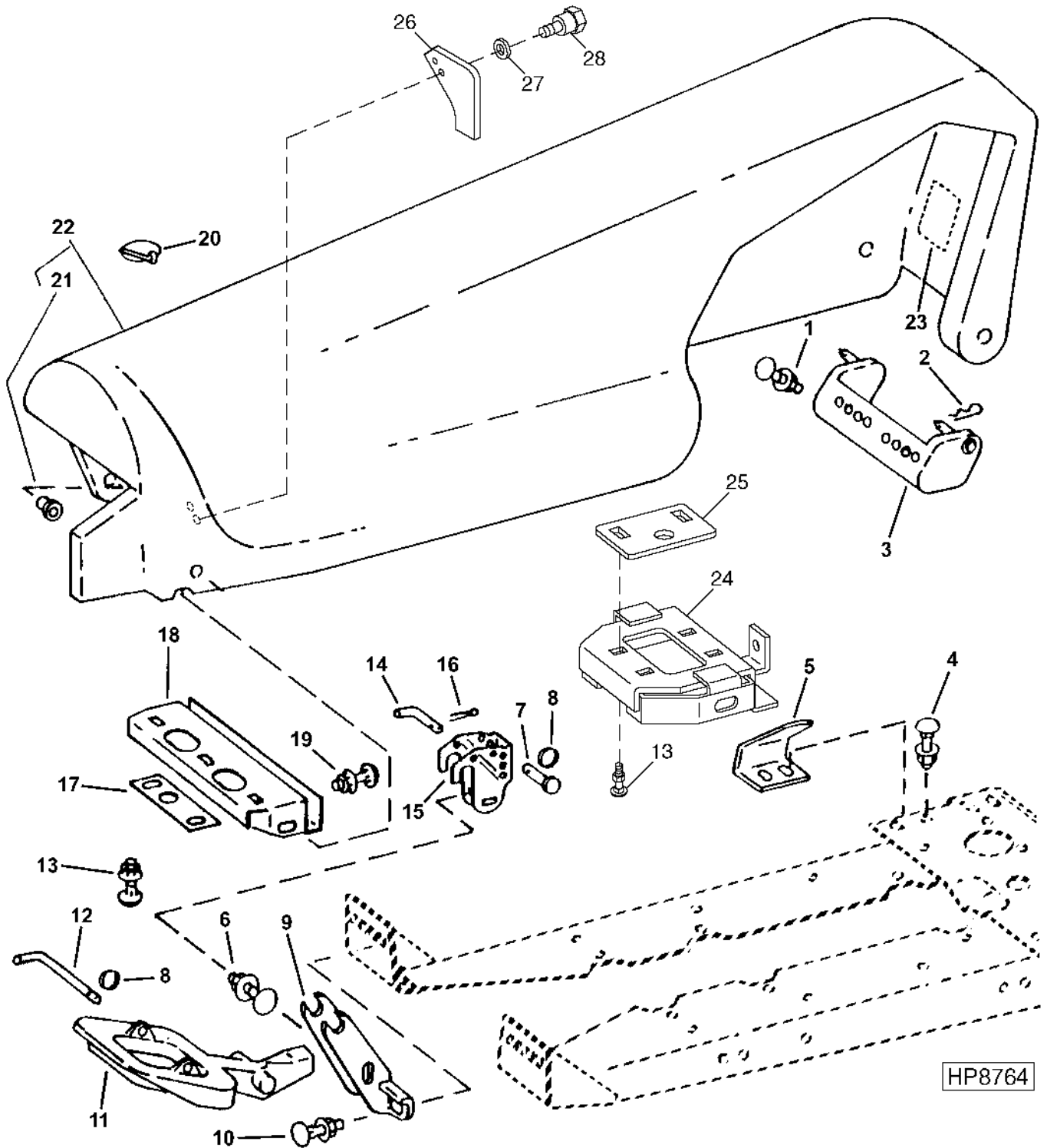
(A) THESE PARTS INCLUDED IN BH81180

NOTE: QUANTITIES SHOWN ARE FOR ONE OUTER POINT ASSEMBLY.

A11

90 SERIES CORN HEADS

OUTER GATHERER FENDERS
HP8764 -UN-09JUL99



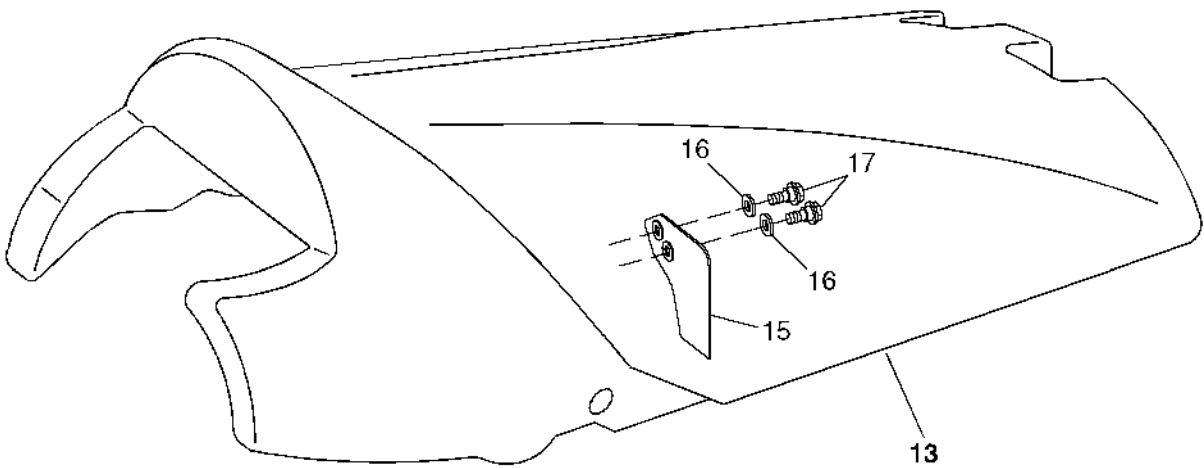
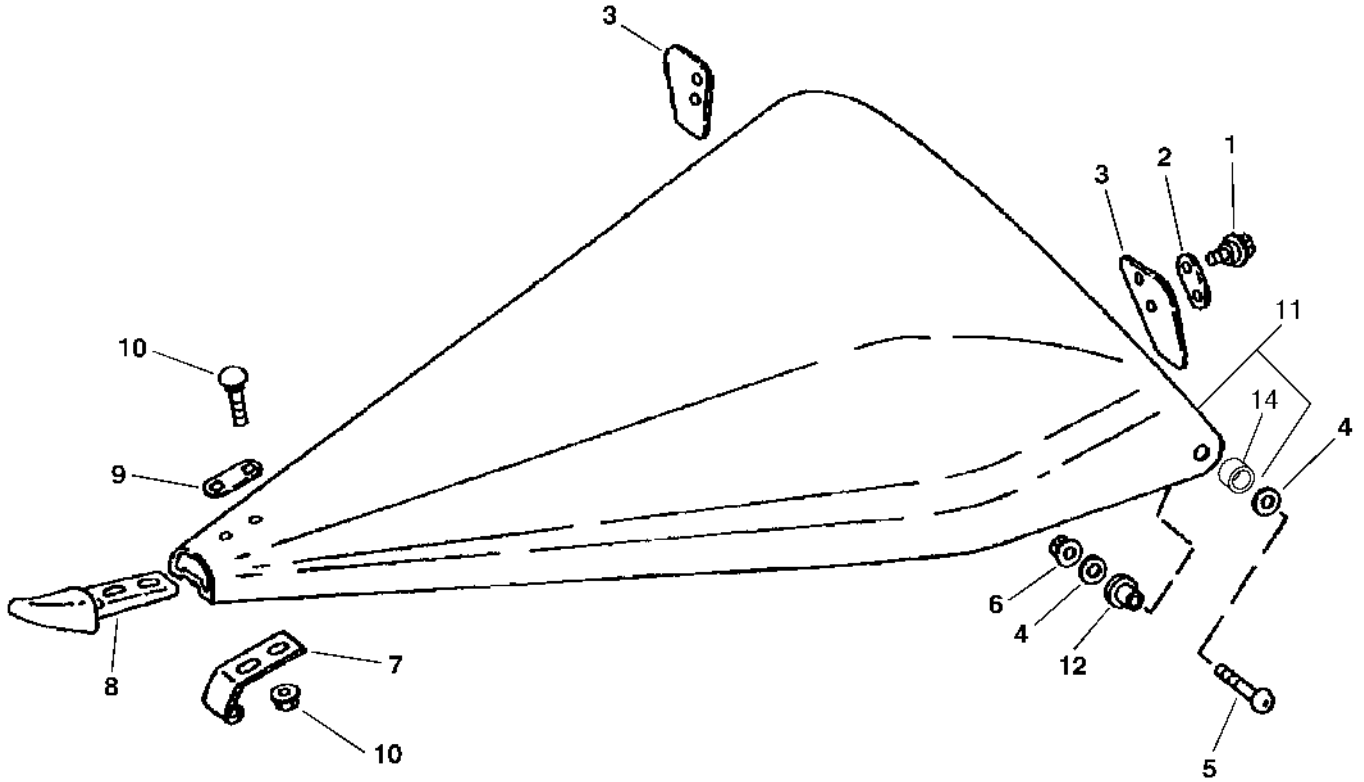
OUTER GATHERER FENDERS - CONTINUED

KEY	PART NO.	PART NAME	QTY	SERIAL NO.	REMARKS
1	03M7192	BOLT	2		M10 X 30
	14M7296	FLANGE NUT	2		M10
2	J16931	SPRING LOCKING PIN	2		
3	AH144716	PIVOT	2		ALL EXCEPT 890, 1092, 1290 AND 1291
	AH147345	PIVOT	2	665101-	(890, 1092, 1290 AND 1291)
4	03M7192	BOLT	2		M10 X 30
	E80242	LOCK NUT	2		
5	H145556	REINFORCEMENT	1		
	H145556	REINFORCEMENT	2	670101-	(890 AND 1092)
6	03M7192	BOLT	2		M10 X 30
	14M7296	FLANGE NUT	2		M10, ALL EXCEPT 890
	03M7192	BOLT	4	670101-	M10 X 30, (890 AND 1092)
7	H148431	PIN	1		
8	H150293	RING	2		
9	H150676	BRACKET	1		R.H., ILLUSTRATED
	H150677	BRACKET	1		L.H.
10	03M7193	BOLT	2		M10 X 35
	14M7296	FLANGE NUT	2		M10
11	H150539	SUPPORT	1		
12	H150538	PIN	1	-660419	(SUB H153022)
	H153022	PIN	1		
13	03M7190	BOLT	4		M10 X 20
	14M7296	FLANGE NUT	4		M10 3/8" X 1/2"
	H148878	PIN	1		
15	H148313	CAM	1		
16	11M7082	COTTER PIN	1		2.500 X 25 MM
17	H148163	PLATE	1	-675100	
	H152191	PLATE	1	675101-	(890, 1290, 1291 AND 1092SP)
18	H148162	BRACKET	1		(SUB H151525) (493, -655305;494, -660200;693, -660619;694, -660562;893, -660758;894, -660712; 1293-660757)
	H151525	BRACKET	1		
19	03M7196	BOLT	2		M10 X 50
	14M7296	FLANGE NUT	2		M10
20	M72598	QUICK LOCK PIN	1		
21	H147950	BUSHING	2		
22	AH160068	FENDER	1		(SUB FOR AH145271, AH144817 AND AH141630) R.H., ILLUSTRATED
	AH160069	FENDER	1		(SUB FOR AH145272, AH144818 AND AH141631) L.H.
	AH158243	FENDER	1	675101-	R.H. 20" AND 22" ROWS ONLY (890, 1092SP, 1290 AND 1291)
	AH158244	FENDER	1	675101-	L.H. 20" AND 22" ROWS ONLY (890, 1092SP, 1290 AND 1291)
23	JD5902	REFLECTOR	2		
24	AH158247	BRACKET	1	675101-	(890, 1290 AND 1291)
25	H152191	PLATE	1		(890, 1290 AND 1291)
26	H166582	GATE	1	676001-	
27	24H1111	WASHER	2	676001-	17/32" X 1-1/16" X 0.090"
28	H169568	SCREW	2	676001-	

NOTE: QUANTITIES SHOWN ARE FOR ONE FENDER ASSEMBLY.

A13

INNER GATHERER POINTS
HP8430 -UN-15JUL99



HP8430

A14

90 SERIES CORN HEADS

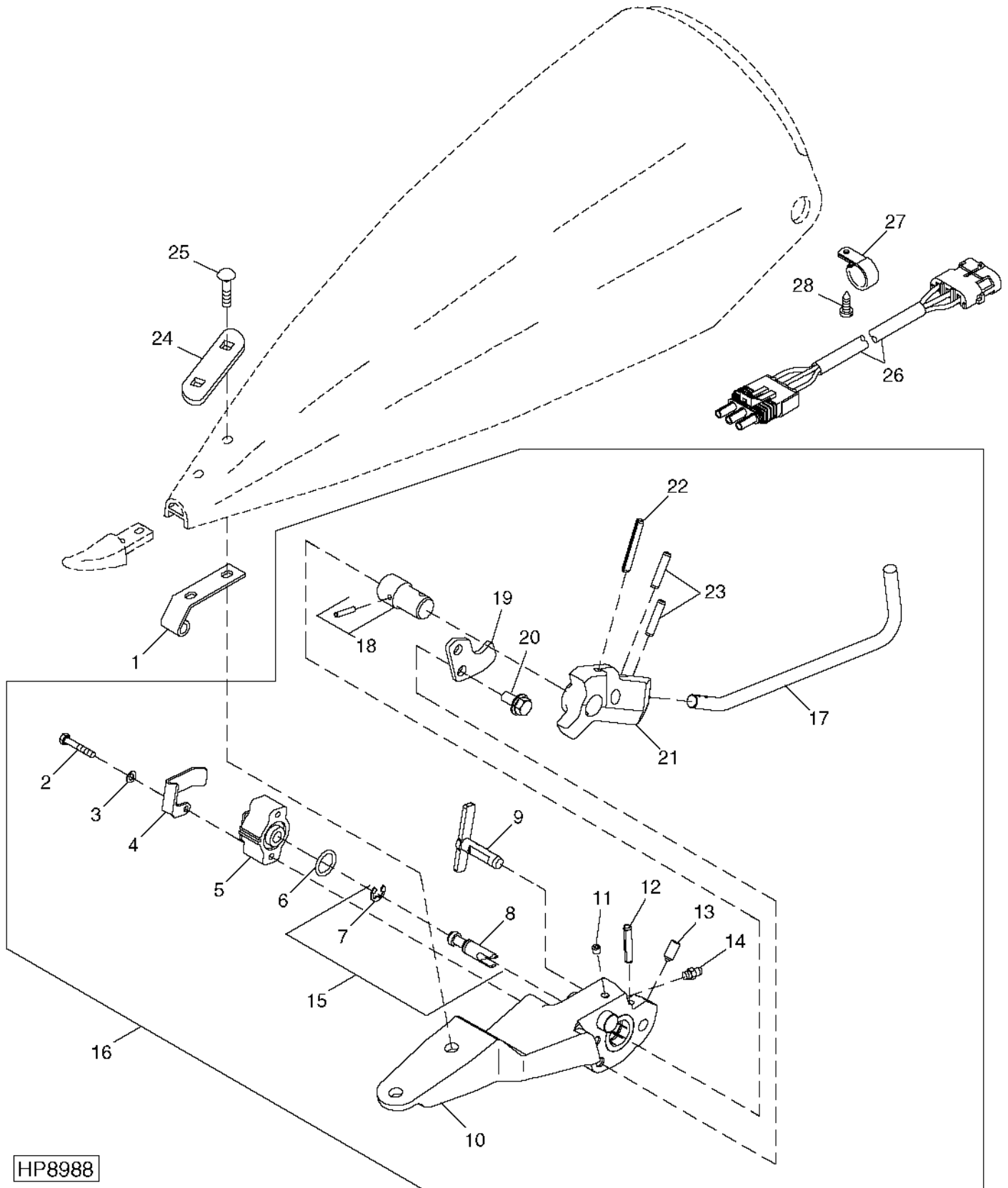
INNER GATHERER POINTS - CONTINUED

KEY	PART NO.	PART NAME	QTY	SERIAL NO.	REMARKS
1	H146489	SCREW	4	-676000	
2	H148273	STRIP	2	-676000	
3	H148223	GATE	2	-676000	
	H166581	GATE	2	676001-	
4	24H1226	WASHER	4		1/2" X 1-1/4" X 0.083"
5	H141991	BOLT	2		
6	E80242	LOCK NUT	2		
7	H150537	REINFORCEMENT	1		
8	H148121	SHOE	1		
9	H148436	STRAP	1		
10	03M7246	BOLT	2	M10 X 60	
	14M7296	FLANGE NUT	2	M10	
11	AH146577	GATHERER POINT	1		(SUB FOR AH141626) NARROW, FOR 30" ROW SPACING (493 - 3 USED; 693 - 5 USED; 893 - 7 USED; 1293 - 11 USED)
	AH146188	GATHERER POINT	1		(SUB FOR AH141627) WIDE, FOR 36"-38" ROW SPACING (494 3 USED; 694 - 5 USED; 894 - 7 USED)
12	H141850	BUSHING	2		
13	AH160065	COVER	1		(SUB FOR AH149893) FOR 30" ROW SPACING
	AH160066	COVER	1		(SUB FOR AH149894) FOR 36/38" ROW SPACING
14	H169694	SPACER	1		
15	H166582	GATE	2	676001-	
16	24H1111	WASHER	4	676001-	17/32" X 1-1/16" X 0.090"
17	H169568	SCREW	4	676001-	

NOTE: QUANTITIES SHOWN ARE FOR ONE INNER GATHERER POINT ASSEMBLY.

A15

INNER GATHERER POINTS WITH ACTIVE HEIGHT CONTROL
HP8988 -UN-01SEP99



HP8988

A16

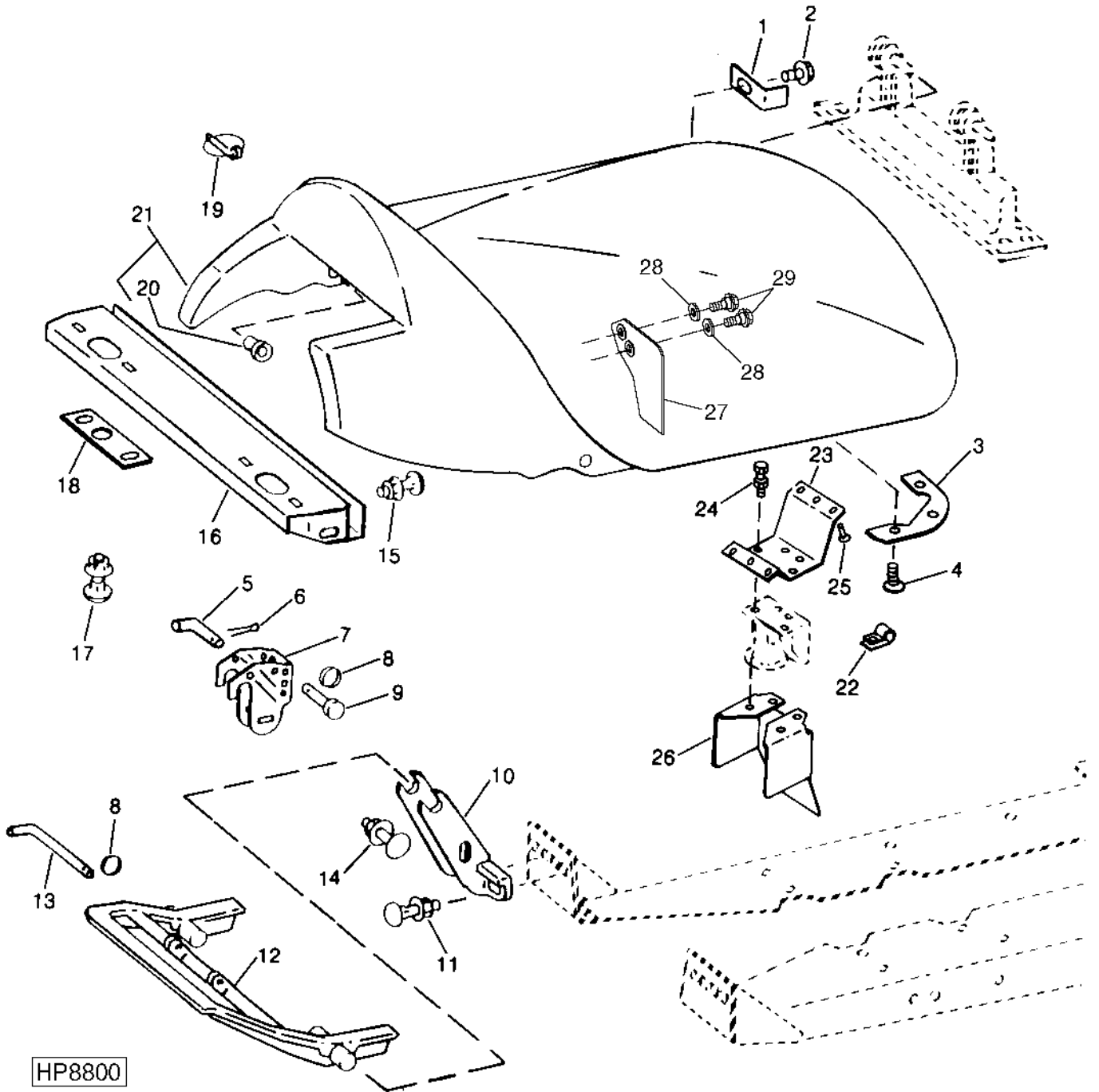
90 SERIES CORN HEADS

INNER GATHERER POINTS WITH ACTIVE HEIGHT CONTROL - CONTINUED

KEY	PART NO.	PART NAME	QTY	SERIAL NO.	REMARKS
1	H150537	REINFORCEMENT	1		
2	19M7317	SCREW	2		M5 X 30
3	12M7060	WASHER	2		5.300 MM
4	H172460	BRACKET	1		
5	RE69297	SENSOR	1		
6	P48347	O-RING	1		
7	R72653	SNAP RING	1		
8	H168968	SHAFT	1		
9	AH159837	PIN	1	685056-	
10	AH165088	BASE	1	685056-	
11	22H841	SET SCREW	1		1/4" X 1/4"
12	34M7216	SPRING PIN	1		6 X 35 MM
13	AH159841	PLUNGER	1		
14	JD7797	LUBRICATION FITTING	1		
15	AH159850	SHAFT	1		
16	AH159830	SENSOR	AR	685056-	(494, 592, 594, 692, 693, 694, 890-2 USED; 892, 893, 894, 1092, 1290, 1291, 1293-3 USED)
17	H169471	FOLLOWER	1	685056-	
18	AH159849	SHAFT	1		
19	H168965	PLATE	1		
20	19M7865	SCREW	2		M8 X 16
21	H168963	ARM	1	685056-	
22	34M7043	SPRING PIN	1		6 X 45 MM
23	34M7040	SPRING PIN	2		6 X 30 MM
24	H166283	STRAP	1		
25	03M7246	BOLT	2		M10 X 60
26	AH166626	WIRING HARNESS	1		(694 AND 894 CENTER ROW ONLY)
	AH166625	WIRING HARNESS	1		
27	AH89557	CLIP	10		
28	M71190	SCREW	10		

A17

INNER GATHERER COVER AND SUPPORT WITH ULTRASONIC SENSORS
HP8800 -UN-15JUL99



INNER GATHERER COVER AND SUPPORT WITH ULTRASONIC SENSORS - CONTINUED

KEY	PART NO.	PART NAME	QTY	SERIAL NO.	REMARKS
1	H146882	STRAP	1		
2	19M7866	SCREW	1	M8 X 20	
3	H141947	PLATE	2		
4	19M7573	SCREW	6	M8 X 20	
5	H148878	PIN	2		
6	11M7082	COTTER PIN	2	2.500 X 25 MM	
7	H148313	CAM	2		
8	H150293	RING	3		
9	H148431	PIN	1		
10	H150676	BRACKET	1	R.H., ILLUSTRATED	
	H150677	BRACKET	1	L.H.	
11	03M7193	BOLT	4	M10 X 35	
	14M7296	FLANGE NUT	4	M10	
12	H150540	SUPPORT	AR		NARROW, 30" ROW SPACING (493 - 3 USED; 693 - 5 USED; 893 - 7 USED; 1293 11 USED)
	H150541	SUPPORT	AR		WIDE, 36" AND 38" ROW SPACING (ILLUSTRATED) (494 - 3 USED; 594 - 4 USED; 694 - 5 USED; 894 - 7 USED)
13	H153022	PIN	AR		(SUB FOR H150538) (493, 494 - 3 USED; 594 - 4 USED; 693, 694 - 5 USED; 893, 894 - 7 USED; 1293-11 USED)
14	03M7192	BOLT	4	M10 X 30	
	14M7296	FLANGE NUT	4	M10	
15	03M7196	BOLT	4	M10 X 50	
	14M7296	FLANGE NUT	4	M10	
16	H148160	BRACKET	1	NARROW, 30" ROW SPACING	
	H148161	BRACKET	1	WIDE, 36" AND 38" ROW SPACING (ILLUSTRATED)	
17	03M7190	BOLT	4	M10 X 20	
	14M7296	FLANGE NUT	4	M10	
18	H148163	PLATE	2		
19	M72598	QUICK LOCK PIN	2	-665200	
	M115827	QUICK LOCK PIN	2	665201-	
20	H147950	BUSHING	2		
21	AH141628	COVER	AR	-670000	NARROW, 30" ROW SPACING (493-3 USED; 693-5 USED; 693SH-5 USED; 893-7 USED AND 1293-USED)
	AH160065	COVER	AR	670001-	NARROW, 30" ROW SPACING (493-3 USED; 693-5 USED; 693SH-5 USED; 8937 USED AND 1293-11 USED)
	AH141629	COVER	AR	-670000	WIDE, 36" AND 38" ROW SPACING (ILLUSTRATED) (494-3 USED, 594-4 USED, 694-5 USED AND 894-7 USED)
	AH160066	COVER	AR	670001-	WIDE, 36" AND 38" ROW SPACING (ILLUSTRATED) (4943 USED; 594-4 USED; 694-5 USED AND 894-7 USED)
22	H137101	CLAMP	1		(CONTOUR MASTER)
23	H148179	BRACKET	1		(WITH CONTOUR MASTER)
24	19M7775	SCREW	4		M6 X 16, (WITH CONTOUR MASTER)
	14M7303	FLANGE NUT	4		M6, (WITH CONTOUR MASTER)
25	R55326	RIVET	6		4.775 MM (3/16") (WITH CONTOUR MASTER)
26	H149422	SHIELD	1		(WITH CONTOUR MASTER)
27	H166582	GATE	2	670001-	
28	24H1111	WASHER	4	670001-	17/32" X 1-1/16" X 0.090"
29	H169568	SCREW	4	670001-	

BH80285 (COMPLETE GOODS) ATTACH IDENTIFICATION - LATERAL TILT CONVERSION (1293)

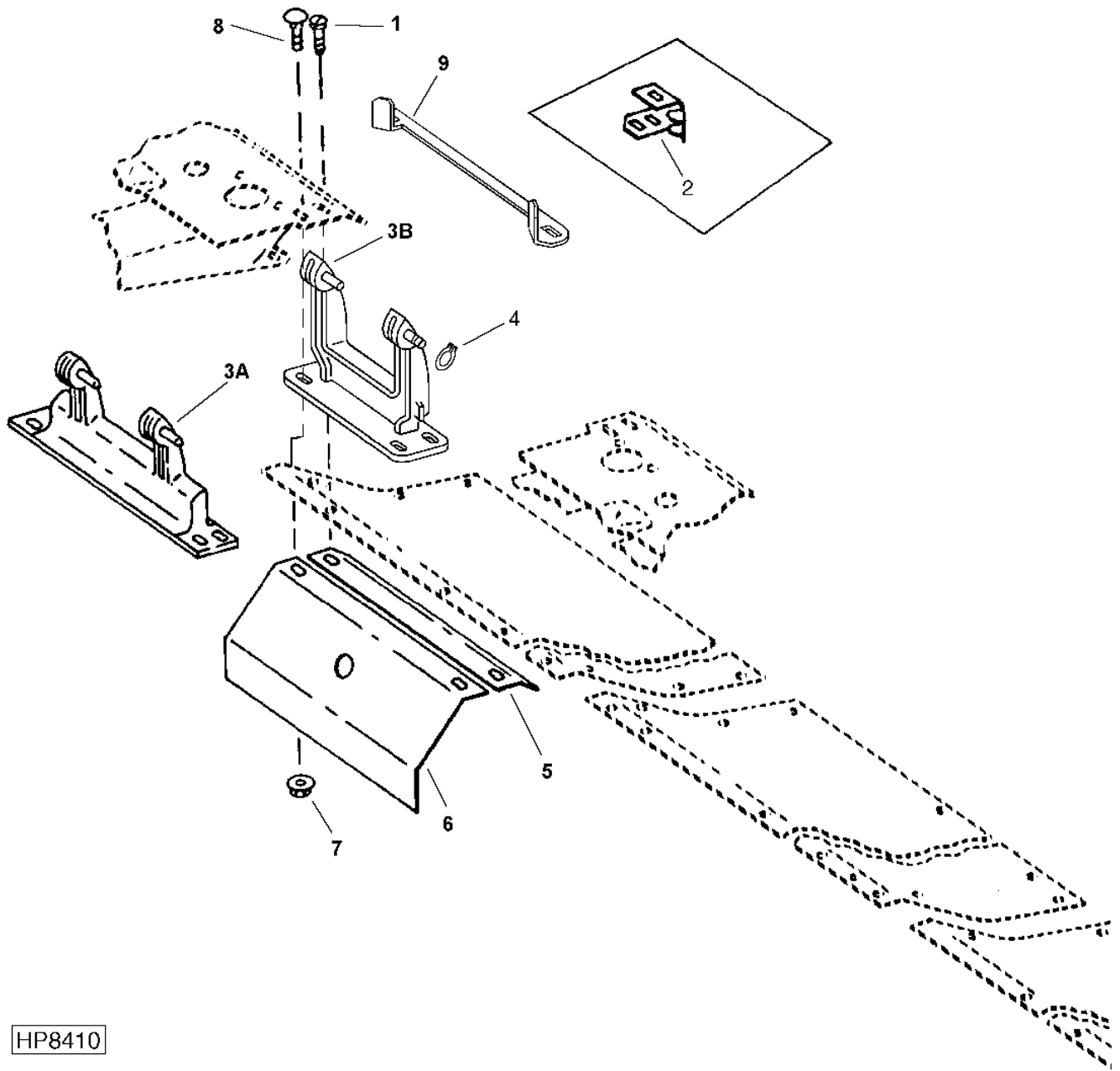
NOTE: QUANTITIES SHOWN ARE FOR ONE INNER GATHER COVER ASSEMBLY.

BH81443 (COMPLETE GOODS) LATERAL TILT CONVERSION PARTS

BH80284 (COMPLETE GOODS) ATTACH IDENTIFICATION - LATERAL CONVERSION (893,894)

A19

INNER GATHERER SUPPORT AND SHIELD
HP8410 -UN-01APR99



HP8410

INNER GATHERER SUPPORT AND SHIELD - CONTINUED

KEY	PART NO.	PART NAME	QTY	SERIAL NO.	REMARKS
1	03M7193	BOLT	AR		M10 X 35, (493,494-6 USED; 594-8 USED; 693,694-10 USED; 893,894-14 USED; 1293-22 USED)
2	H149562	DEFLECTOR	AR		(SUB H150665 OR H150666) L.H. (493,494 - 4 USED; 594 - 5 USED; 693, 694 - 6 USED; 893,894 - 8 USED; 1293 - 12 USED) (493 -655201; 494 -655307; 594 -655402; 693 -655704; 694 -655561; 893 -655807; 894 -655707; 1293 -655759)
	H149561	DEFLECTOR	AR		(SUB H150665 OR H150666) R.H. (493, 494 - 4 USED; 594 - 5 USED; 693, 694 - 6 USED; 893, 894 - 8 USED; 1293 - 12 USED) (493 -655201; 494 -655307; 594 - 655402; 693 -655704; 694 -655561; 893 - 655807; 894 -655707; 1293 -655759)
3A	AH143462	PIVOT	AR		NARROW, 30" ROW SPACING (493-3 USED; 693, - 5 USED; 893-7 USED; 1293-11 USED)
	AH143463	PIVOT	AR		WIDE, 36" AND 38" ROW SPACING (ILLUSTRATED) (494 - 3 USED; 594 - 4 USED; 694 - 5 USED; 894 - 7 USED)
3B	AH149178	PIVOT	9	670301-	(1092)
4	H150663	SNAP RING	2		
5	H146502	ANGLE	AR		NARROW, 30" ROW SPACING (493 - 3 USED; 693 - 5 USED; 893 - 7 USED; 1293 - 11USED)
	H146503	ANGLE	AR		WIDE, 36" AND 38" ROW SPACING (ILLUSTRATED) (494 - 3 USED; 594 - 4 USED; 694 - 5 USED; 894 - 7 USED)
	H153627	PLATE	AR		NARROW, 20" AND 22" ROW SPACING (890 - 7 USED, 1290 AND 1291 - 11 USED)
	H151217	ANGLE	AR	670301-	(1092)
6	H151759	SHIELD	AR		(SUB FOR H149561) NARROW, 30" ROW SPACING (493 - 3 USED; 693 - 5 USED; 893 - 7 USED; 1293 - 11 USED)
	H151760	SHIELD	AR		(SUB FOR H146512) WIDE, 36" AND 38" ROW SPACING (ILLUSTRATED) (494 - 3 USED; 594 - 4 USED; 694 - 5 USED; 894 - 7 USED)
	H151761	SHIELD	1	670301-	(1092)
7	14M7296	FLANGE NUT	AR		M10, (493, 494 - 12 USED; 594 - 16 USED; 693, 694 - 20 USED; 893, 894 - 21 USED; 1293 -44 USED)
8	03M7192	BOLT	AR		M10 X 30, (493 - 6 USED; 594 - 8 USED; 693 - 10 USED; 890 - 14 USED; 1092 - 18 USED)
	03M7191	BOLT	AR		M10 X 25, (594 - 8 USED; 694 - 10 USED; 893, 894 AND 1092 - 14 USED)
	03M7193	BOLT	AR		M10 X 35, (494 - 6 USED)
9	H154839	DEFLECTOR	AR		(SUB FOR H151215 AND H150665) R.H. FOR NARROW SPACING (493-3 USED; 693-5 USED; 693SH-5 USED; 893-7 USED; 1293-11 USED)
	H154840	DEFLECTOR	AR		(SUB FOR H150666) L.H. FOR WIDE SPACING (494-3 USED; 594-4 USED; 694-5 USED; 894-7 USED)